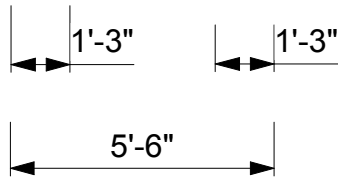
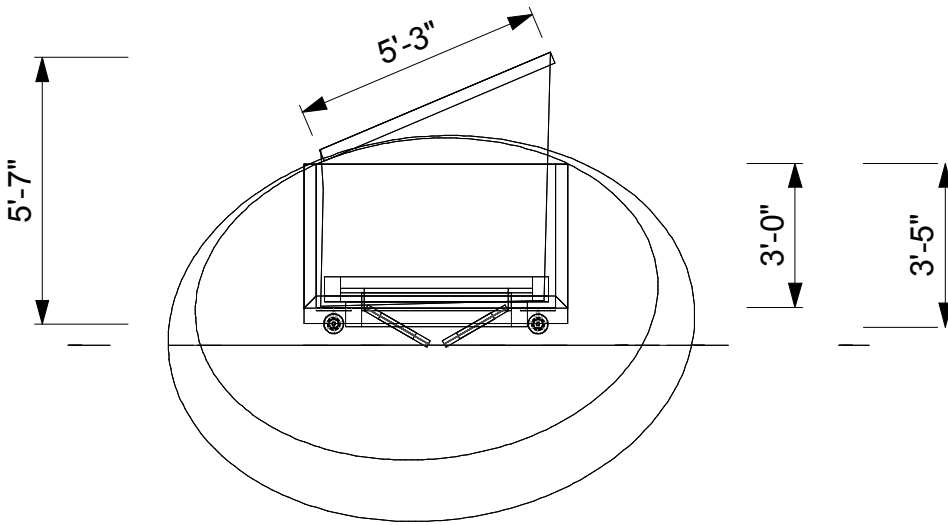
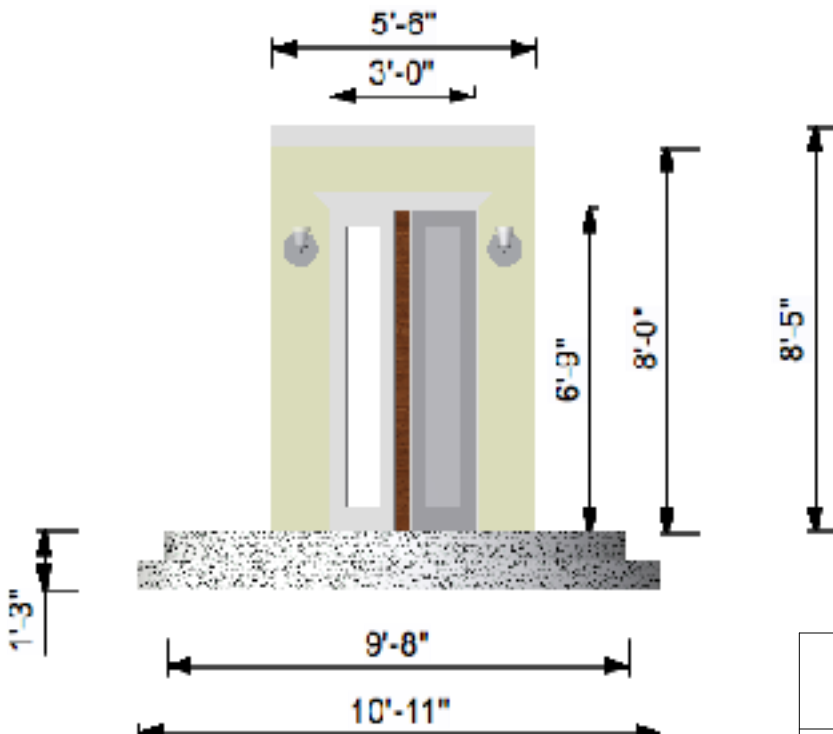


GUARD HOUSE UNIT



TOP



FRONT

- Notes:
1. Back wall angled for masking upstage area
 2. 'Glass' panels in doors would be awesome!
 3. Please build oval platforms separate from guard house building (placement for blocking/masking done at load-in)
 4. 2 lighting practicals on either side of door
 5. Need floor to extend beyond oval platforms on upstage side (see upstate triangle section)

Much Ado About Nothing	
Director: Karen Berman	Georgia College- Russell
Scenic: Frani Geiger	Drawing: Guard House (1of2)
TD: Lucian Connole	SC = 1/2" - 1'0"